

# Electronic dice

## Variables

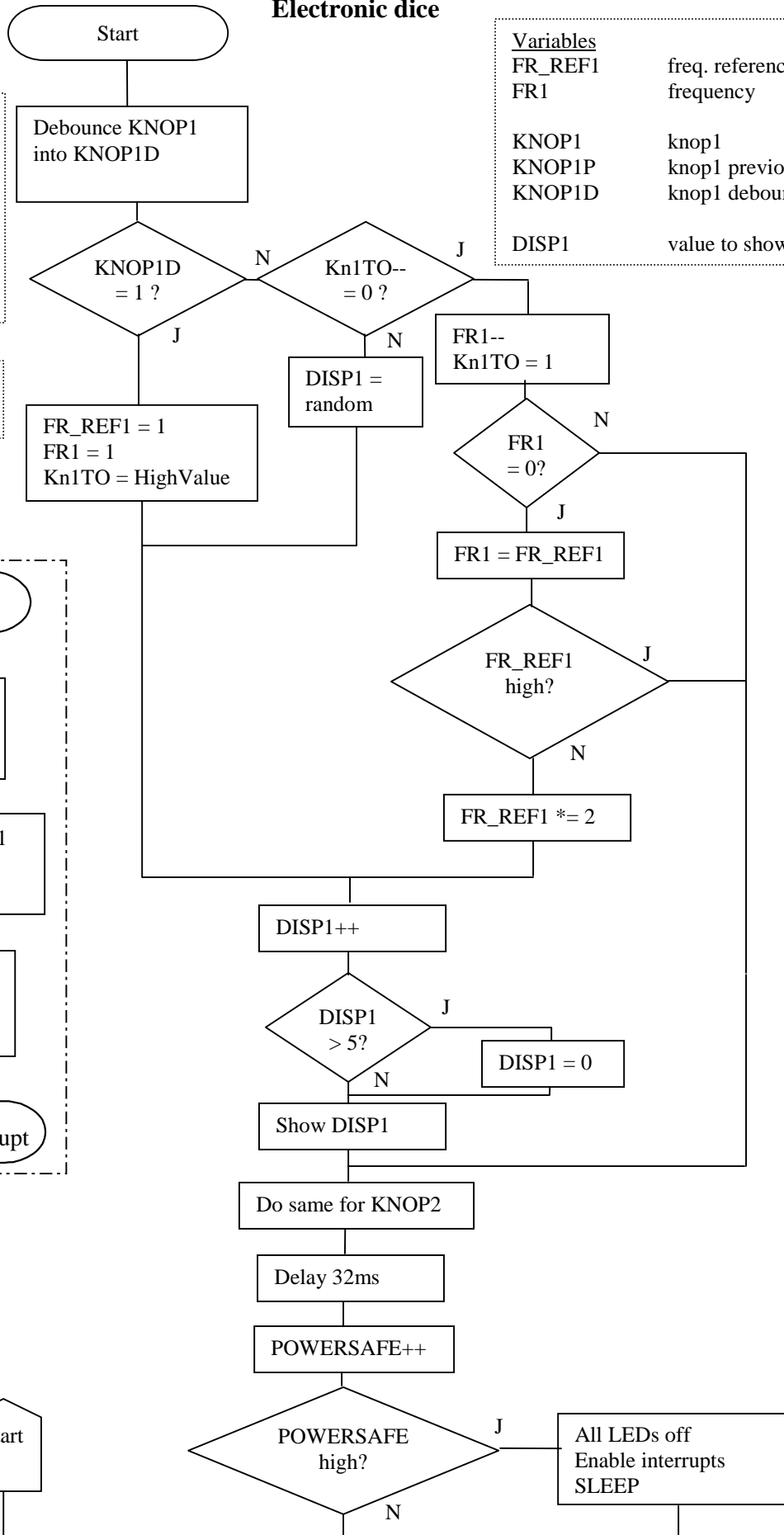
FR_REF1	freq. reference frequency
FR1	frequency
KNOP1	knop1
KNOP1P	knop1 previous value
KNOP1D	knop1 debounced
DISP1	value to show in display

## Init

FR\_REF1 = 0xff  
 FR1 = 1  
 KNOP1 = 0  
 KNOP1D = 0  
 DISP1 = 0  
 POWERSAFE = 0  
 Kn1TO = 1

## Defines

HighValue = 5



## Interrupt Service routine

Read PORTB

Split result into KNOP1 and KNOP2

POWERSAFE = 0

Return from interrupt